

Indiana University Northwest

Donald L. Steward
Vice Chancellor
Information Technology
Gary, Indiana

Instructional Services

- Working with the Shared Vision
Conducive Classroom Committee to:
 - Place fixed multi-media instructor's stations in 19 classrooms
 - Replace tablet arm chairs with stackable chairs and tables in 4 classrooms

Instructional Services

- Pilot CD Rom duplication service for education classes
- Assist faculty with presentations

Microcomputer Support

- All faculty and staff personal computers on life-cycle funding
- Moved from Dell to Gateway pc's across campus

Microcomputer Support

- Current OS is Windows XP or Windows 2000 or Mac OS 9
- Sales of old pc's resulted in \$58,000 returned to life cycle funding and student technology fee accounts

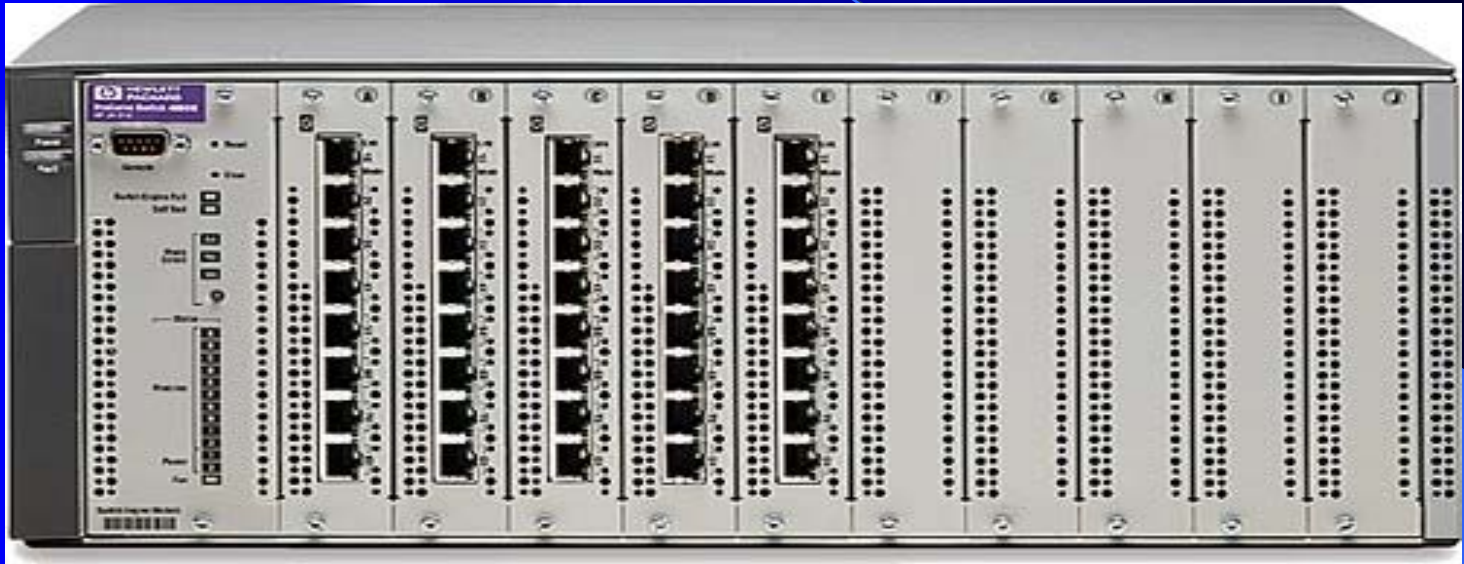
Network Architecture

- Previous Network Configuration
 - CISCO 7206 Router
 - Synoptic hubs
 - Category 3 wiring
 - Fixed IP addresses

Technical Services

- Moved to 1 Gigabit Ethernet between buildings
- 45 Megabit network connection to IU
- Backup 1.5 Megabit network connection to South Bend
- Dynamic IP addressing

Network Updates



- 50 New HP 4000 Switches providing 1000+ nodes to replace outdated hubs

Network Updates



- HP 3404 Gigabit Switch (OEM version of Foundry Big Iron switch)
- 1 Gigabit Ethernet between buildings
- Potential for 10 Gigabit Ethernet

Hawthorn 108 Support Lab

- Teaching and Learning Center
 - Training Coordinator
 - Provides Steps and Prosteps classes customized for Northwest campus
 - Global ID (and e-mail) sign up assistance

Hawthorn 108 Support Lab

- Administrative Support Center
 - Computerized skills assessment testing
 - Online registration support
 - Career counseling assessment testing and workshops
 - Telecounseling Center



Student Technology Fees in Action

Student Technology Centers (open labs)

- Extended hours for day and evening students
- Staffed by student lab consultants

Marram 103 STC

66 Gateway E-4200 650 MHz PC's

18 Macintosh PowerPC G3 400MHz

Gateway E-4200 650 MHz graphics workstation with scanner

Gateway PC with Jaws for visually impaired students

3 High speed high capacity lasers and a color printer

STC manager's office

Savannah Center 227 STC

36 Gateway E-3600 1.7 GHz PC's

High speed laser printing

Open 6-9 AM for community use

Medical Education STC

10 Gateway E-3600 933 Mhz PC's

6 Apple iMac 333's

laser printing

Renovated Classrooms



Marram 134

- 12 Mac PowerPC G3 350 MHz
- Same for instructor

Renovated Classroom

Raintree 202

- 36 Gateway E-3400
933 MHz PCs
- Same for instructor



Renovated Classrooms



Raintree 211

- 30 Gateway E-3400 933 MHz PCs
- Same for instructor

Renovated Classrooms



Raintree 212

- 24 Mac PowerPC G3 350 MHz
- Same for instructor

Renovated Classrooms



Hawthorn 333

- 24 Gateway E-3400 933 MHz PCs
- Same for instructor

Renovated Classrooms



Hawthorn 428

- 24 Mac PowerPC G4 533 MHz
- Same for instructor

Renovated Classrooms



Hawthorn 454

- 24 Mac PowerPC G4 350 MHz
- Same for instructor

Portage Commons Site

- Instructional Site 10+ miles from Gary
- 25 Gateway E-4200 550MHz computers
- 2 Apple PowerPC G4 350MHz computers
- 3 HP 4050N laser printers
- NEC MT830 Plus LCD projector
- Networking to main campus

Geographic Information Systems Classroom/Lab Library 230

- Custom GIS software
- Kodak DP1100 LCD projector
- 14 Gateway E-4200 550 MHz computers
- 7 HP 1120 CXI Printers
- HP 5000 laser printer
- 12" x 17" tabloid-size scanner
- 11" x 17" graphics tablet

Modern Languages Lab Library 130

- Custom language software
- 10 Apple iMac 333Hz computers
- HP 4000 laser printer

Software Support Upgrades

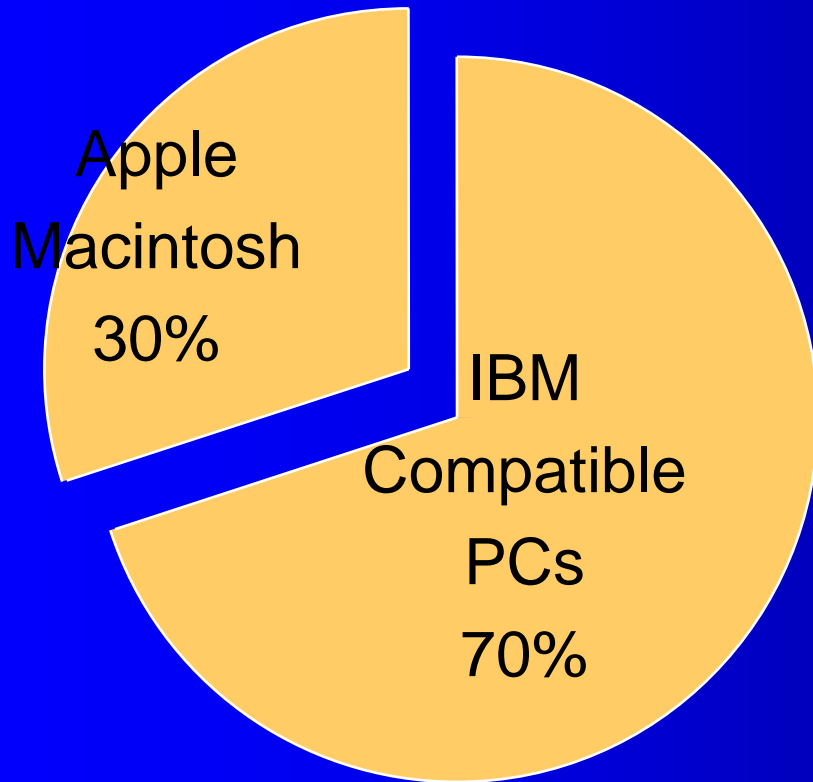
- All PCs to Microsoft Windows 2000
- All Macintoshes to OS 9
- \$5000 Graphic Arts software added to 25 Macintosh PowerPC G3 computers
- \$20,000 site-licensed math and statistical software contracted via Math/Stat Lab at IUB

The background is a dark blue gradient with a lighter blue curved shape on the right side. A thin, light blue curved line starts from the top left and arcs across the top of the page.

Information Technology Strategic Plan Accomplishments

Action 1 – 3

Desktop Microcomputers



IUN
Microcomputer
Environment

Pre-ITSP Microcomputers

- Hand-built PCs
 - 80486s to Pentium 166s
- Apple
 - LCIIIs to 60MHz Power PCs

New Minimum PC Standard

- Pentium III 450MHz Processor
- 128MB RAM and 8 MB video RAM
- 6.4GB Ultra ATA hard drive
- Floppy and CD-ROM drives
- 100MB zip drive
- 10/100 Ethernet adapter

New Minimum PC Standard

- 17" monitor, keyboard, mouse
- Sound and speakers
- Windows 2000 Operating System and Microsoft Office 2000 Professional Suite
- Norton Anti-Virus Corporate edition
- 3-Year on-site next business day maintenance

New Minimum Apple Macintosh Standard

- 350MHz PowerPC G3 Processor
- 128MB RAM and 16MB Video RAM
- 6GB Ultra ATA hard drive
- CD-ROM drive
- 100MB zip drive

New Minimum Apple Macintosh Standard

- 17" monitor
- OS 9.x Operating System
- MS Office 98 Professional
- 3-year on-site next business day maintenance
- Built-in sound and speakers

Other ITSP Actions

Action 21: Classroom Technology

- Shared Vision Conducive Classroom Committee conversion of 19 classrooms to fixed multi-media instructional stations

Action 21: Classroom Technology

- 17 overhead projectors and carts for fixed classroom placement
- 4 Elmo EV500AF video copy stands
- 2 Sony ceiling-mounted LCD projectors
- 3 Gateway E-4200 400MHz micros
- 4 Apple PowerPC G3/G4 350 micros

Indiana University Northwest

Donald L. Steward
Vice Chancellor
Information Technology